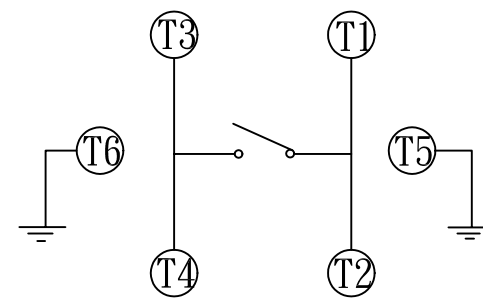
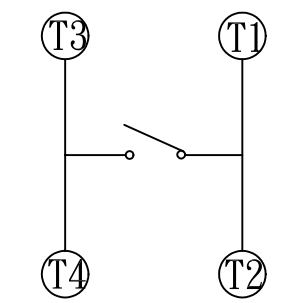


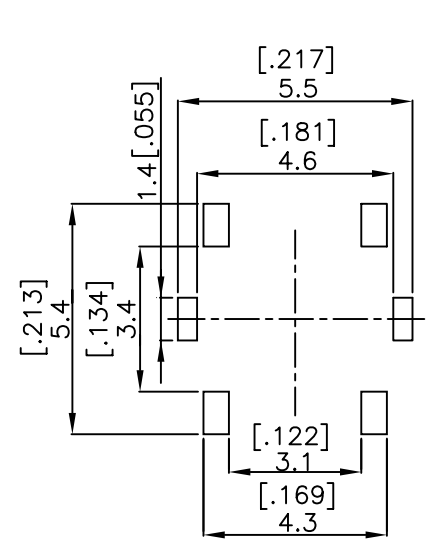
TJG-53*



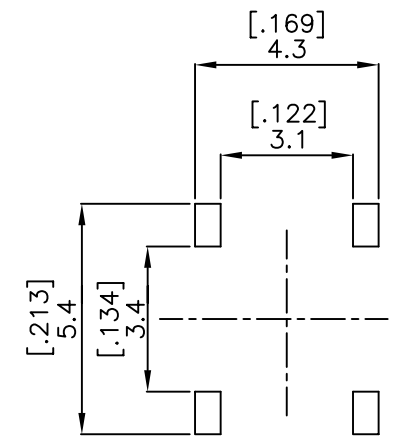
WITH GROUND
CIRCUIT DIAGRAM



WITHOUT GROUND
CIRCUIT DIAGRAM



WITH GROUND
P.C.B LAYOUT



WITHOUT GROUND
P.C.B LAYOUT

PART NO: OF
TJG-533 160g
TJG-534 260g

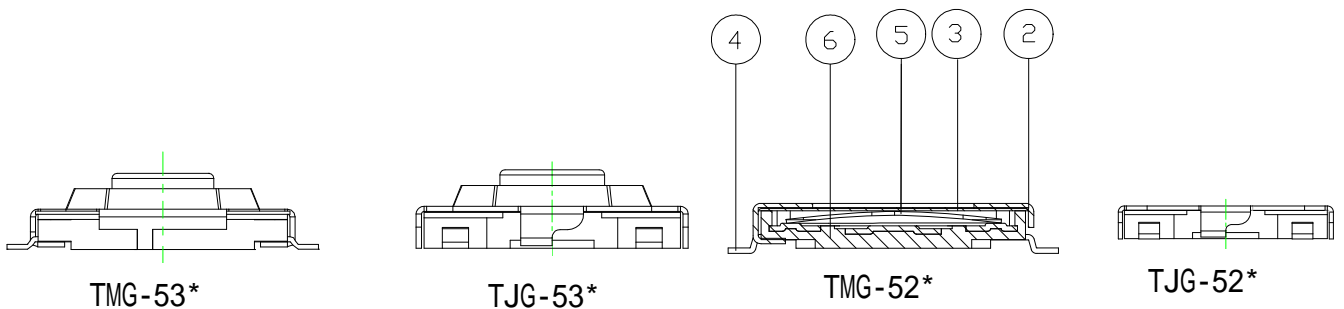
NOTE:
1.General Tolerance: $\pm 0.20\text{mm}$
2.Stroke: $0.2 + 0.05 / - 0.1\text{mm}$
3.Electrical Life: 160g=1,000,000 cycles
260g=500,000 cycles

△				
△				
△	A1	DWG. REL		
ZONE	REV.	DESCRIPTION	DATE	APPD.

APPD:	QTY:	JOYNet Enterprise Co., Ltd. Technology • Profession • Service	
CHKD:	SCALE: 15:1		
DR: 張文逸	REV: A1	UNITS: mm	PART NO: MAT'L:
DESIGN: 張文逸			FINISH:

TJG-53□
RD5PJ3

ITEM	DESC.	Q'TY	MATERIALS	TREATMENT	REMARK
1.	METAL STEM	1	BRASS	NICKEL PLATED	-
2.	COVER	1	NICKEL SILVER	NONE	-
3.	ADHESIVE TAPE	1	TEFLON	NONE	-
4.	TERMINAL	1	BRASS	WITH SILVER CLADDING	-
5.	CONTACT	1	PHOSPHOR BRONZE STAINLESS STEEL	WITH SILVER CLADDING	-
6.	BASE	1	HIGH - TEMP THERMOPLASTIC LCP	MOLDED BLACK	-



REMARK:

① PROD. NO. :

TERMINATION TYPE:

M = M TYPE S.M.T.

J = J TYPE S.M.T.

Prod. Series:

G = With Ground Terminal

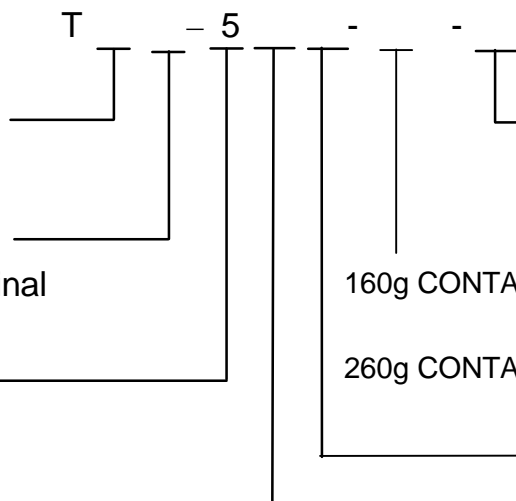
PROD. SIZE:

5 = 5 X 5

TOTAL HEIGHT:

2 = 0.8 mm

3 = 1.5 mm



Package Style:

=REGULAR

T\R=TAPE & REEL

160g CONTACT : =PHOSPHOR BRONZE

S = STAINLESS STEEL

260g CONTACT : = STAINLESS STEEL

OPERATING FORCE :

3 = 160g.

4 = 260g.

F	增加彈片材質	
E	工(工變)03014	李正哲
D	新增腳型 J TYPE	李正哲
C	新增 TM(G)-523, 增加 260 荷重	李正哲
B	工(工變)01024	李正哲
A	DWG.REL.	李正哲
RVE.	ECO NO.	APPD.

TITLE:		APPD :	
TACTILE SWITCH TYPE		CHKD.:	
PROD. NO. : T - 5 - - -		PR .: 楊佩儒	
FILE NO. : E-B-CT16		REV: F	SHEET: 1of1