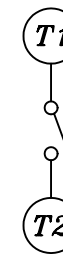
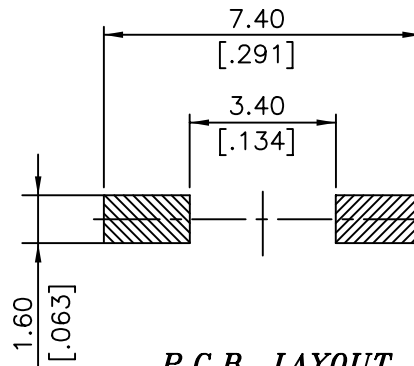
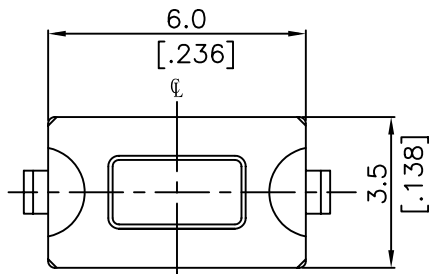


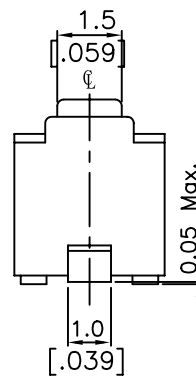
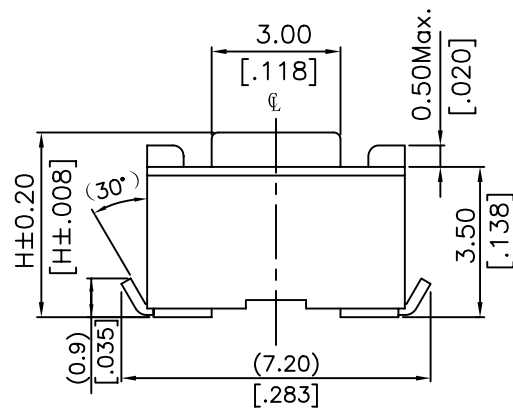
NOTE:

1. ALL DIMENSIONS ARE IN MILLIMETERS, BRACKETED DIMENSIONS ARE IN INCHES.
2. GENERAL TOLERANCES MAX. ±0.20mm.



P.C.B. LAYOUT

CIRCUIT DIAGRAM

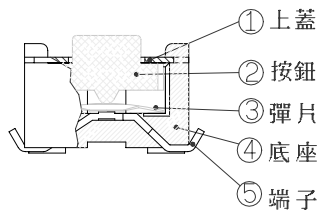


DTSM-32 □	5.0 [0.197]	Y	YELLOW 520g
		S	SALMON 320g
		R	RED 260g
		N	BROWN 160g
DTSM-31 □	4.3 [0.169]	Y	YELLOW 520g
		S	SALMON 320g
		R	RED 260g
		N	BROWN 160g
PROD. NO.	H	COLOR FOR OPERATING FORCE	

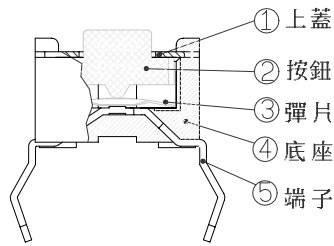
△	D	新增DTSM-3*R		
△	C	新增DTSM-3*Y		楊豐富
△	B	新增DTSM-32	05.12'99	楊豐富
△	A	DWG. REL.	11.28'98	楊豐富
ZONE	REV	DESCRIPTION	DATE	APPD.

APPD:	Q'TY:			PART NAME:	
CHKD:	SCALE: 8 : 1			TACTILE SWITCH (3.5x6) (S.M.T TYPE)	
DR:	REV: D	UNITS: mm	PART NO:	MAT'L:	DWG NO:
DESIGN:			DTSM-3□□	FINISH:	R D 5 P 3 M

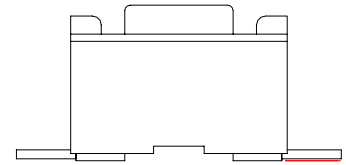
ITEM	DESC.	Q'TY	MATERIALS	TREATMENT	REMARK
1.	COVER	1	STAINLESS STEEL	NONE	
2.	STEM	1	HIGH – TEMP THERMOPLASTIC NYLON 9T UL 94V-0	→	
3.	CONTACT	1	STAINLESS STEEL	WITH SILVER CLADDING	
4.	TERMINAL	1	BRASS	WITH SILVER CLADDING	
5.	BASE	1	HIGH – TEMP THERMOPLASTIC NYLON UL 94V-0	MOLDED BLACK	



S.M.T TYPE



THROUGH HOLE



S.M.T TYPE

REMARK :

① PROD... NO. : D T S - -

M : Surface Mounting Type
: Through Hole Type

ML: Surface Mounting Type

Prod. Size: _____

3 = 3.5x6

Dimension H:

1 = 4.3 mm

2 = 5.0 mm

Package:

B = Tube Package

R = Tape & Reel

= Bag For DTS

Color Of Stem For
Operating Force :

N = Brown , 160g

S = Salmon, 320g

R = RED , 260g

Y = YEELow, 520g

E	新增規格 R	
D	工變 02064	李正哲
C	新增規格	李正哲
B	<工變>99004 號	楊豐富
A	DWG.REL	楊豐富
REV.	ECO. NO.	APPD.

TITLE : TACTILE SWITCH SMT/THROUGH NON-WASHABLE TYPE	APPD. :
	CHKD. :
PRROD. NO. : DTS -3	PR. : 楊佩儒
FILE NO. : E-B-CT13	REV : E SHEET : 1 of 1