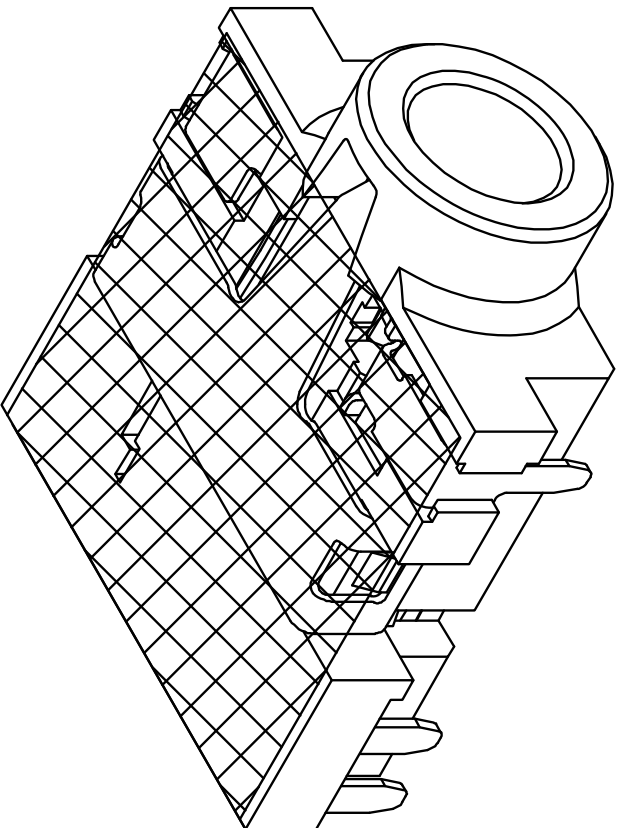
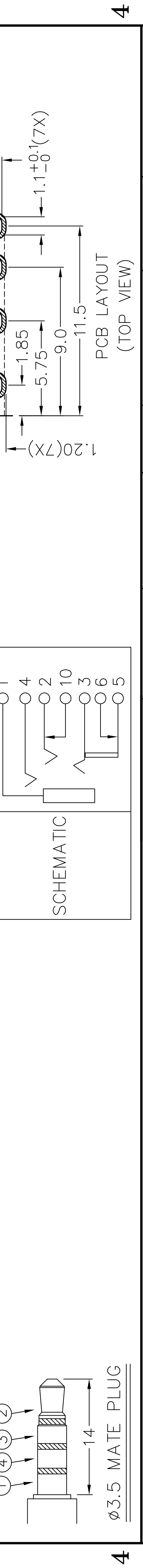
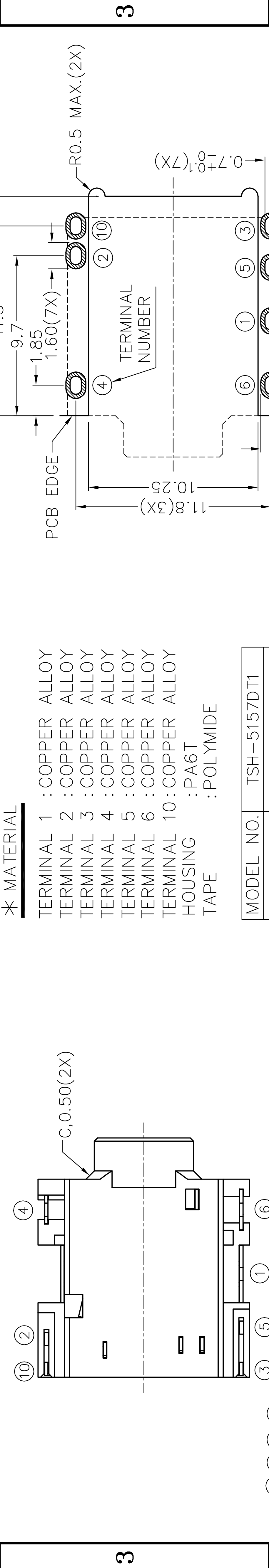
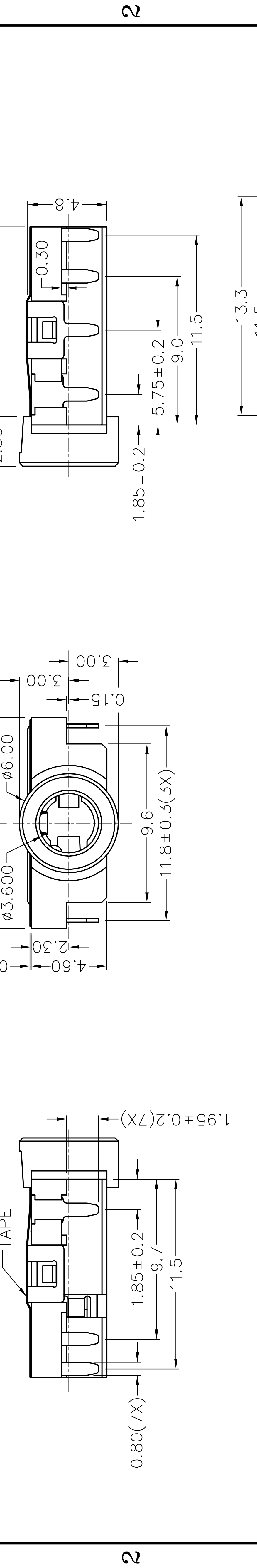
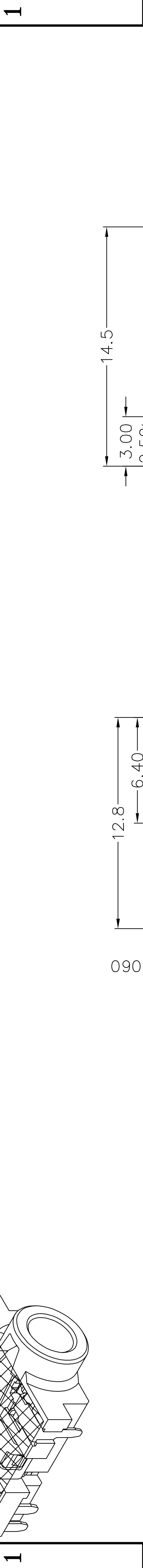
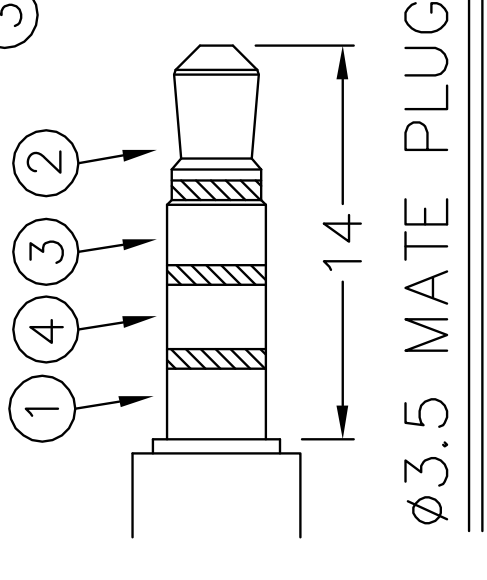
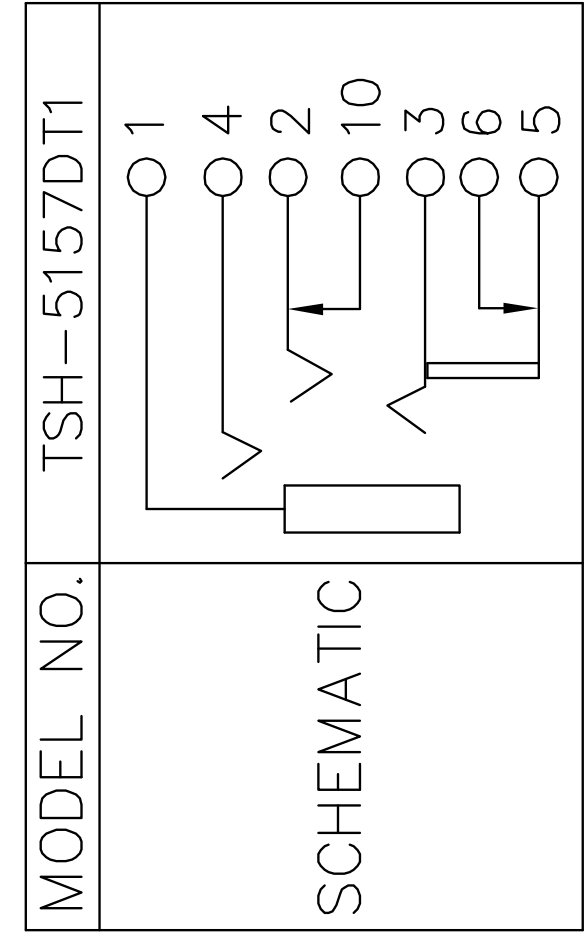



F		E		D		C		B		A	
				<div style="border: 1px solid black; padding: 5px; text-align: center;"> RoHS Compliant </div>		ZONE SYMBOL		REVISION		APPROVAL DATE	



*** MATERIAL**

- TERMINAL 1 : COPPER ALLOY
- TERMINAL 2 : COPPER ALLOY
- TERMINAL 3 : COPPER ALLOY
- TERMINAL 4 : COPPER ALLOY
- TERMINAL 5 : COPPER ALLOY
- TERMINAL 6 : COPPER ALLOY
- TERMINAL 10 : COPPER ALLOY
- HOUSING : PA6T
- TAPE : POLYIMIDE



		DESIGN	H.L.TAN	DATE	12-5-2011	SCALE	3:1
		DRAWING	H.L.TAN	DATE	12-5-2011	MATERIAL	*
PART NAME	3.5mm SMD STEREO JACK	TOLERANCE UNLESS	0.0±0.2	CHECK		DWG. NO.	TZ\SH515DT1-PA6T/A
PART NO.	TSH-515DT1	OTHERWISE SPECIFIED:	0.00±0.1 0.000±0.05	APPROVAL		SHEET	