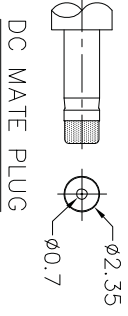
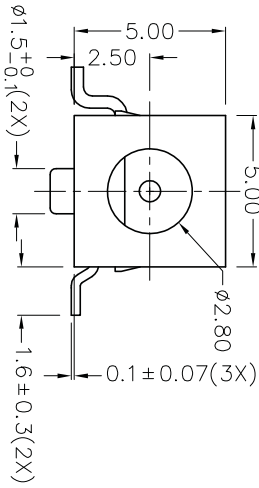
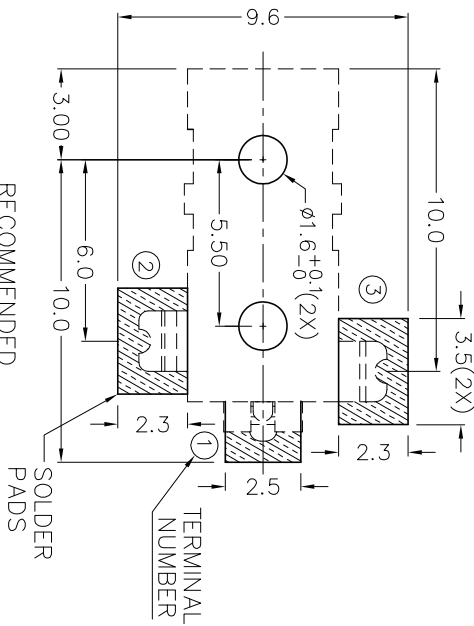
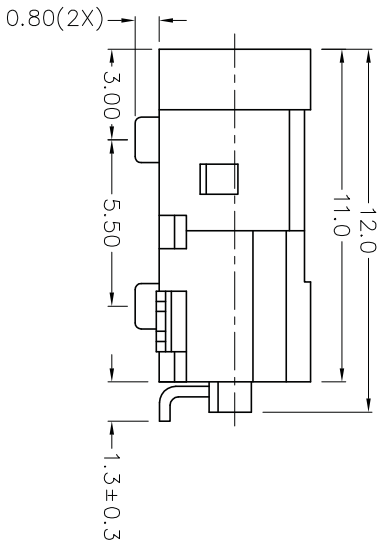
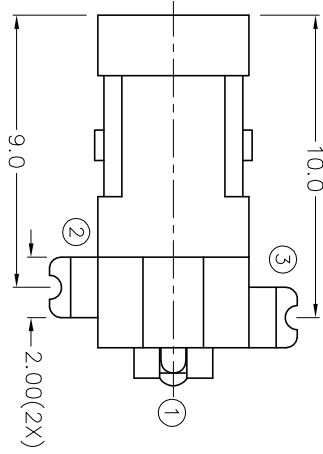
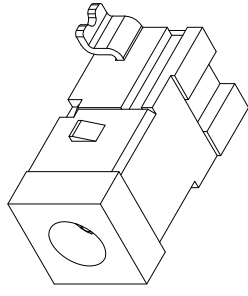


ROHS
Compliant

C		B		A	
ZONE	SYMBOL	REVISION	APPROVAL	DATE	
		ADD MATE PLUG	J.X.KUANG	12-7-2006	



MODEL NO.	TDC-051DH
SCHEMATIC	
CENTER PIN	φ0.65mm

* MATERIAL
 TERMINAL 1 : BRASS
 TERMINAL 2 : COPPER ALLOY
 TERMINAL 3 : BRASS
 HOUSING : PA6T

RECOMMENDED
 SOLDER PAD LAYOUT

SOLDER PADS
 TERMINAL NUMBER

JOYNet Enterprise Co., Ltd.
 Technology * Profession * Service

PART NAME	HIGH CURRENT SMD DC POWER SOCKET	TOLERANCE UNLESS	0.0±0.2	UNIT:	mm	DESIGN	J.X.KUANG	DATE	26-7-2004	SCALE	4:1
PART NO.	TDC-051DH	OTHERWISE SPECIFIED:	0.00±0.1			DRAWING	T.Y.LI	DATE	12-7-2006	MATERIAL	*
			0.000±0.05			CHECK		DATE		DWG. NO.	ITZ\DC051DH-PA6T/B
						APPROVAL		DATE		SHEET	

F E D C B A DCF-04/A