

F

E

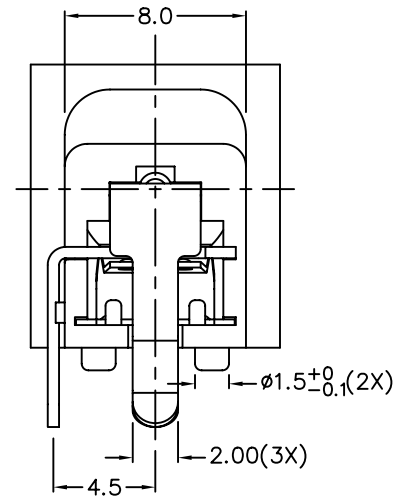
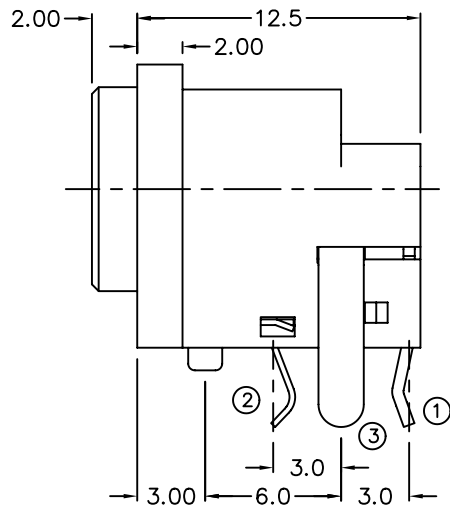
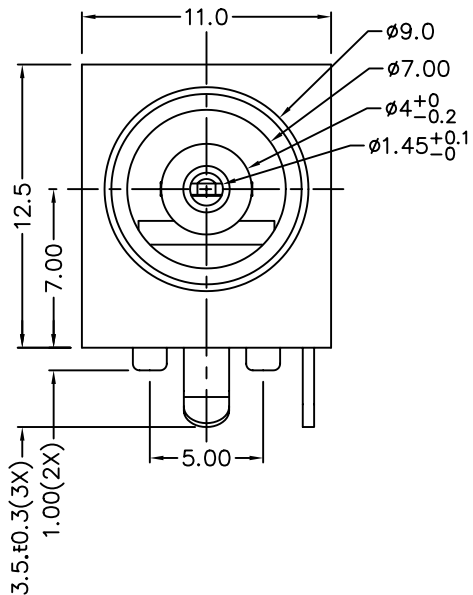
D

C

B

A

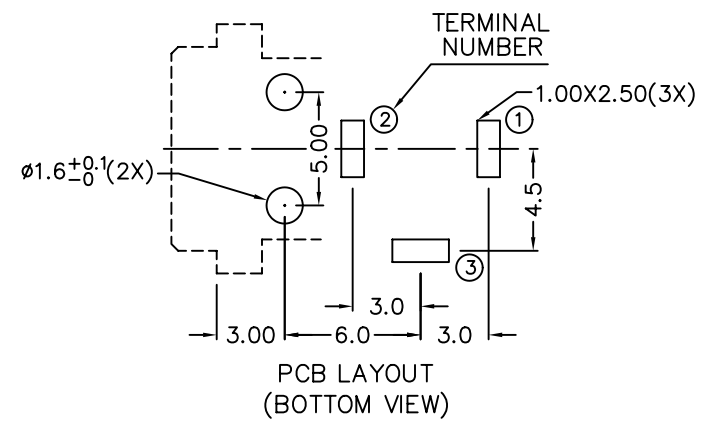
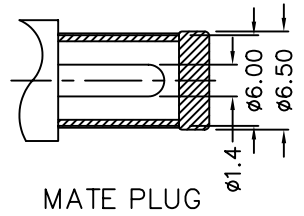
ZONE	SYMBOL	REVISION	APPROVAL	DATE
		DWG. NO. TO REVISE	S.T.CHU	3-11-2003



* MATERIAL

- TERMINAL 1 : BRASS
- TERMINAL 2 : COPPER ALLOY
- TERMINAL 3 : BRASS
- HOUSING : PBT

MODEL NO.	TDC-049
SCHEMATIC	



- 1 Insulation resistance of adjacent open terminals shall not be less than 50 Megohms when measured with 500 Volts resistance meter.
- 2 Connector shall withstand 500 Volts (RMS) between adjacent open terminal for one minute.
- 3 Contact resistance of normally closed terminals shall not exceed 0.03 ohms when measured at a current of one Ampere by Voltage drop method.
- 4 Connector shall withstand 5,000 cycles of insertions and withdrawal with testing plug , contact resistance shall not exceed 0.1 ohm.



DESIGN	Z.X.N	DATE	3-11-2003	SCALE	3:1
DRAWING	Z.X.N	DATE	3-11-2003	MATERIAL	*
CHECK		DATE		DWG. NO.	TZ\DC049-PBT
APPROVAL		DATE		SHEET	

PART NAME	DC POWER SOCKET	TOLERANCE UNLESS	0.0±0.2	UNIT:	mm
PART NO.	TDC-049	OTHERWISE SPECIFIED:	0.000±0.05		

F

E

D

C

B

A DCF-04/A