

F

E

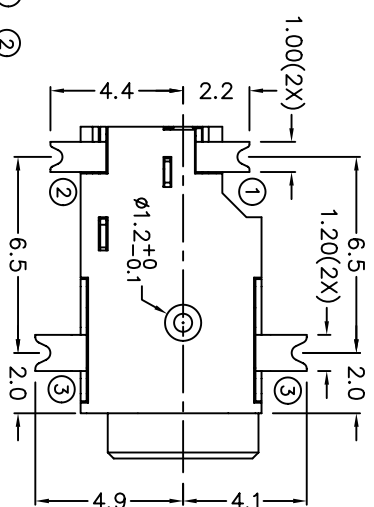
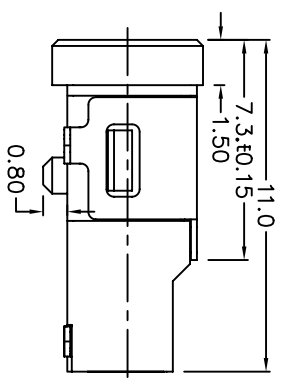
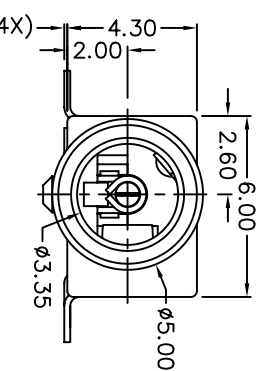
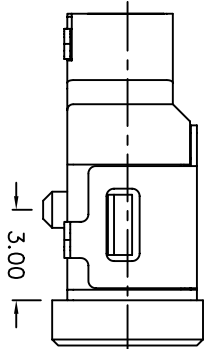
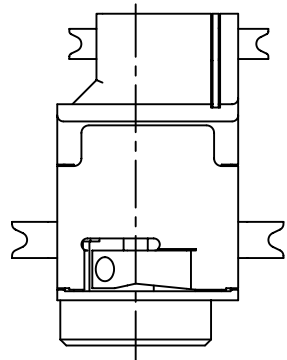
D

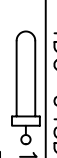
C

B

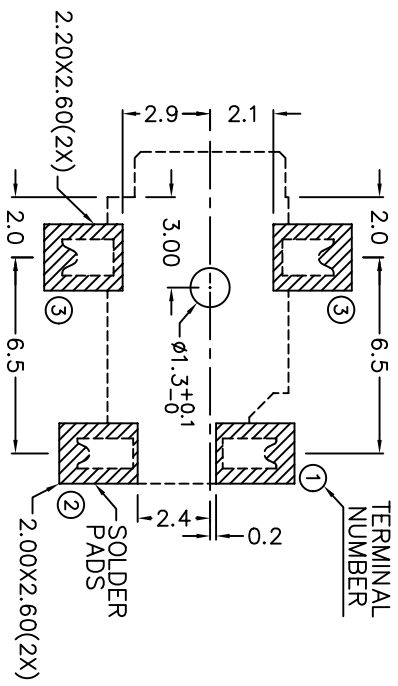
A

ZONE SYMBOL	REVISION	APPROVAL	DATE
F3	MATE PLUG DIM. ADDED	S.T.CHU	11-5-2004



MODEL NO.	TDC-043D
SCHMATIC	
CENTER PIN	∅0.8mm

\* MATERIAL  
 TERMINAL 1 : BRASS  
 TERMINAL 2 : COPPER ALLOY  
 TERMINAL 3 : COPPER ALLOY  
 HOUSING : PA6T




MATE PLUG

SPECIFICATIONS

- Insulation resistance of adjacent open terminals shall not be less than 50 Megohms when measured with 500 Volts resistance meter.
- Connector shall withstand 500 Volts (RMS) between adjacent open terminal for one minute.
- Contact resistance of normally closed terminals shall not exceed 0.03 ohms when measured at a current of one Ampere by Voltage drop method.
- Connector shall withstand 5,000 cycles of insertions and withdrawal with testing plug, contact resistance shall not exceed 0.1 ohm.



PART NAME	SMD DC POWER SOCKET	TOLERANCE UNLESS	0.0±0.2	UNIT:	mm	DESIGN	J.X.KUANG	DATE	11-5-2004	SCALE	4:1
PART NO.	TDC-043D	OTHERWISE SPECIFIED:	0.00±0.1	mm		CHECK	J.X.KUANG	DATE	11-5-2004	MATERIAL	*
F	E	D	C	B	A	APPROVAL	DATE	DATE	DATE	DWG. NO.	TZ\DC043D-PA6T/B
										SHEET	

4 3 2 1