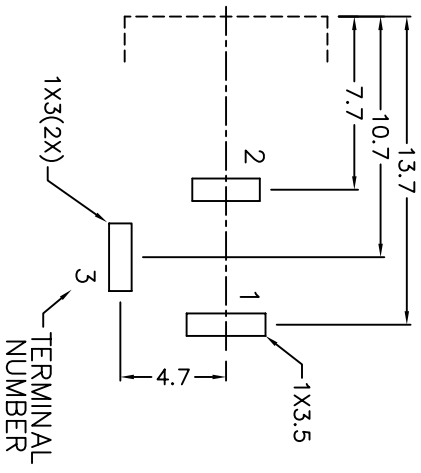
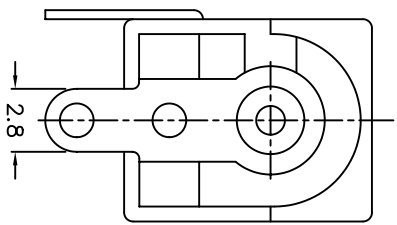
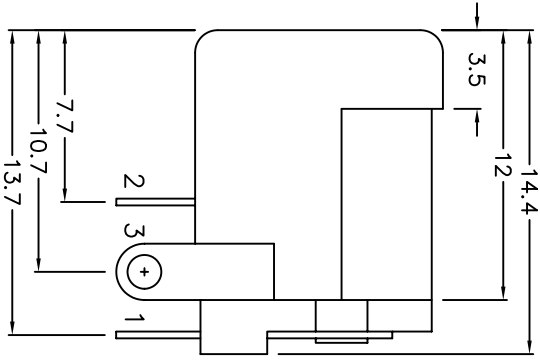
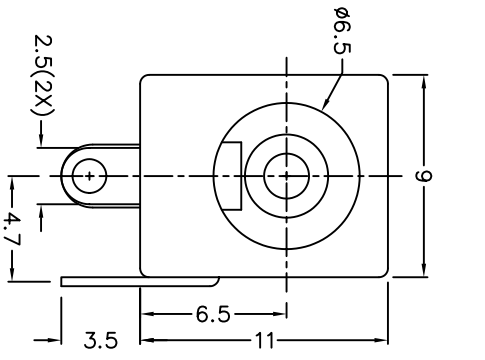


ZONE	SYMBOL	REVISION	APPROVAL	DATE



MODEL NO.	TDC-021-7
SCHEMATIC	

CENTER PIN DIAMETER  
 $\phi$ 2.0mm/ $\phi$ 2.5mm

**\* MATERIAL**  
 CENTRE PIN : COPPER  
 TERMINAL 1 : BRASS  
 TERMINAL 2 : COPPER ALLOY  
 TERMINAL 3 : BRASS  
 (HOUSING) : PBT  
 (COVER) : PBT

**SPECIFICATIONS**

- 1 Insulation resistance of adjacent open terminals shall not be less than 50 Megohms when measured with 500 Volts resistance meter.
- 2 Connector shall withstand 500 Volts (RMS) between adjacent open terminal for one minute.
- 3 Contact resistance of normally closed terminals shall not exceed 0.03 ohms when measured at a current of one Ampere by Voltage drop method.
- 4 Connector shall withstand 5,000 cycles of insertions and withdrawal with testing plug, contact resistance shall not exceed 0.1 ohm.
- 5 After exposed at temperature of 40 +/- 2 C and at relative humidity of 90-95% for 48 hours and dried at room temperature for 30 minutes, insulation resistance shall not be less than 30 Megohms.



PART NAME	DC POWER SOCKET	TOLERANCE : ±0.3	UNIT: mm	DESIGN	J.M.KWAN	DATE	4-5-2000	SCALE	3:1
PART NO.	TDC-021-7	UNLESS OTHERWISE SPEC.		DRAWING	J.M.KWAN	DATE	4-5-2000	MATERIAL	*
				CHECK		DATE		DWG. NO.	TZ\TDC021-7
				APPROVAL		DATE		SHEET	