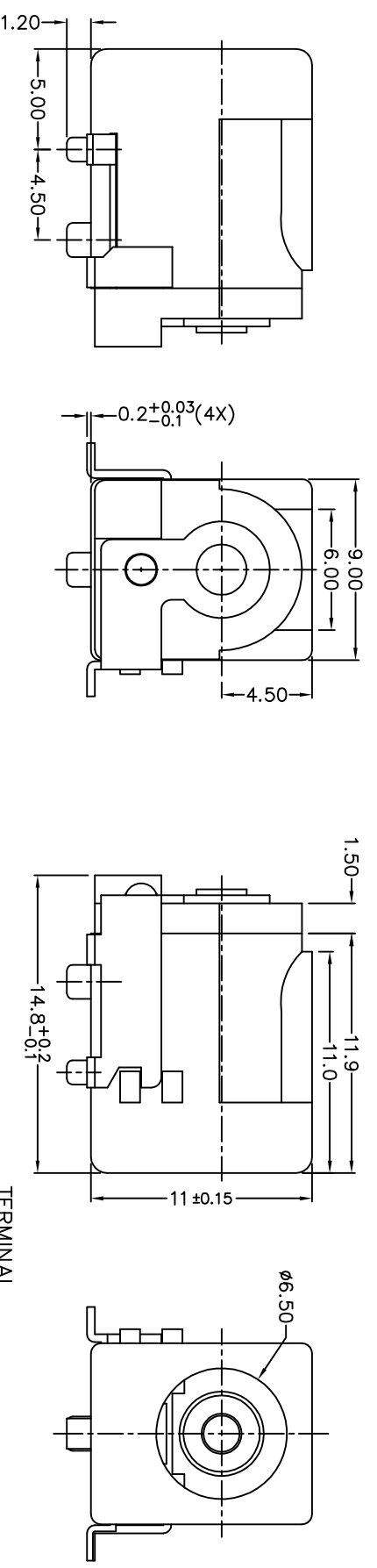
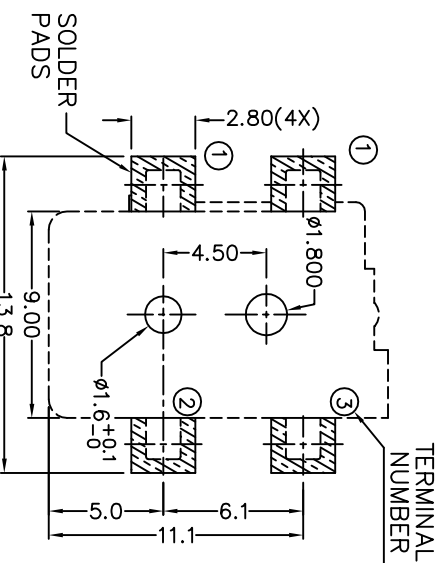
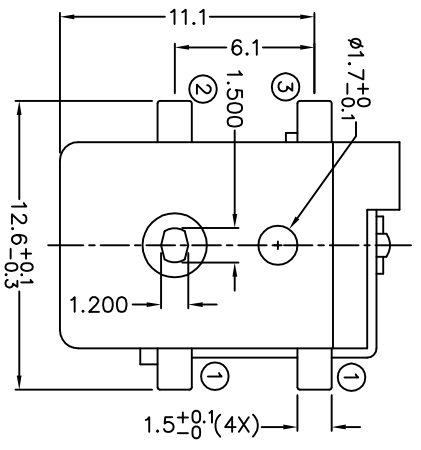


C		B		A	
ZONE	SYMBOL	REVISION	APPROVAL	DATE	
		DWG. NO. TO REVISE	S.T.CHU	9-10-2003	



* MATERIAL:
 CENTRE PIN: BRASS
 TERMINAL 1: BRASS
 TERMINAL 2: COPPER ALLOY
 TERMINAL 3: BRASS
 COVER : PA6T
 HOUSING : PA6T



MODEL NO.	TDC-016H
SCHEMATIC	
CENTER PIN	φ2mm
	φ2.5mm

ROTATE MACHINE CONTACT CENTRE PIN FOR HIGH CURRENT CAPABILITY.

RECOMMENDED
 SOLDER PAD LAYOUT

SPECIFICATIONS

- 1 Insulation resistance of adjacent open terminals shall not be less than 50 Megohms when measured with 500 Volts resistance meter.
- 2 Connector shall withstand 500 Volts (RMS) between adjacent open terminal for one minute.
- 3 Contact resistance of normally closed terminals shall not exceed 0.03 ohms when measured at a current of one Ampere by Voltage drop method.
- 4 Connector shall withstand 5,000 cycles of insertions and withdrawal with testing plug, contact resistance shall not exceed 0.1 ohm.



* Technology
 * Precision
 * SERVICE

PART NAME	HIGH CURRENT SMD DC POWER SOCKET	TOLERANCE UNLESS	0.0±0.2 0.00±0.1	UNIT:	mm	DESIGN	K.Y.AU-YEUNG	DATE	9-10-2003	SCALE	3:1
PART NO.	TDC-016H	OTHERWISE SPECIFIED:	0.000±0.05			DRAWING	K.Y.AU-YEUNG	DATE	9-10-2003	MATERIAL	*
						CHECK		DATE		DWG. NO.	TZ\DC016H-PA6T
						APPROVAL		DATE		SHEET	

F E D C B A DCF-04/A