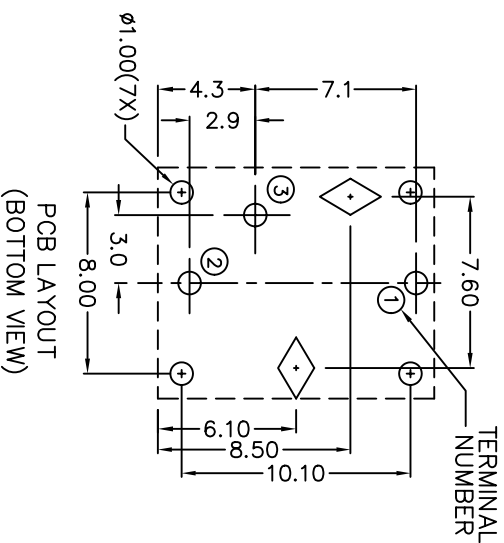
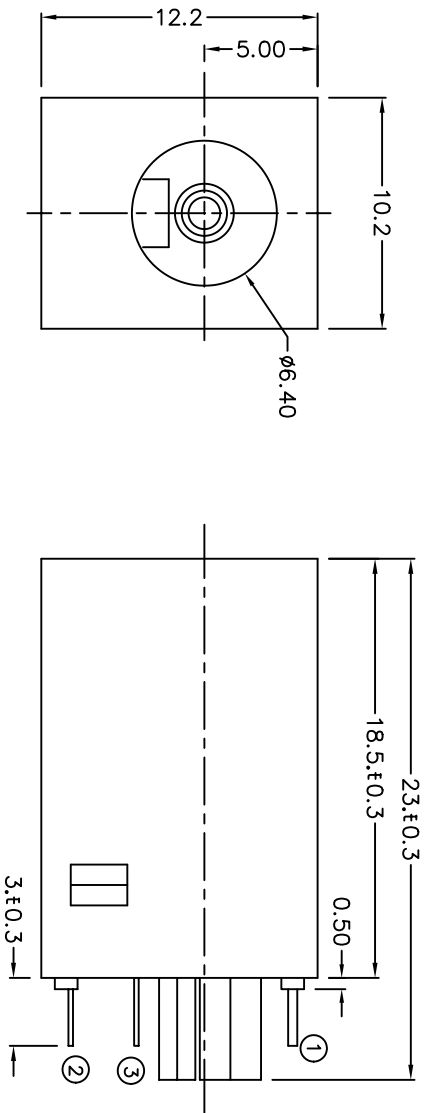


C		B		A	
ZONE	SYMBOL	REVISION	APPROVAL	DATE	
		DWG. NO. TO REVISE	S.T.CHU	9-10-2003	



MODEL NO.	TDC-013
SCHEMATIC	
CENTER PIN	$\phi 2.5\text{mm}$

*** MATERIAL**
 CENTRE PIN : COPPER
 TERMINAL 1 : BRASS
 TERMINAL 2 : COPPER ALLOY
 TERMINAL 3 : BRASS
 HOUSING : PBT
 COVER : PBT

SPECIFICATIONS

- 1 Insulation resistance of adjacent open terminals shall not be less than 50 Megohms when measured with 500 Volts resistance meter.
- 2 Connector shall withstand 500 Volts (RMS) between adjacent open terminal for one minute.
- 3 Contact resistance of normally closed terminals shall not exceed 0.03 ohms when measured at a current of one Ampere by Voltage drop method.
- 4 Connector shall withstand 5,000 cycles of insertions and withdrawal with testing plug, contact resistance shall not exceed 0.1 ohm.

JOYNet Enterprise Co., Ltd.
 Technology
 Profession
 Service

PART NAME	DC POWER SOCKET	TOLERANCE UNLESS	0.0 \pm 0.2	UNIT:	mm	DESIGN	J.M.KWAN	DATE	9-10-2003	SCALE	3:1
PART NO.	TDC-013	OTHERWISE SPECIFIED:	0.00 \pm 0.1			CHECK	J.M.KWAN	DATE	9-10-2003	MATERIAL	*
			0.000 \pm 0.05			APPROVAL		DATE		DWG. NO.	TZ\DC013-PBT
								DATE		SHEET	

F E D C B A DCF-04/A